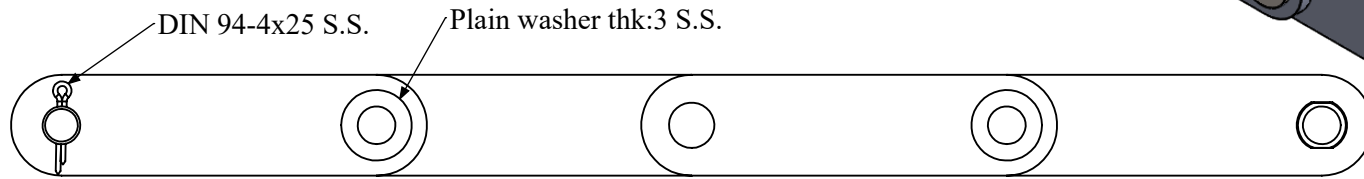


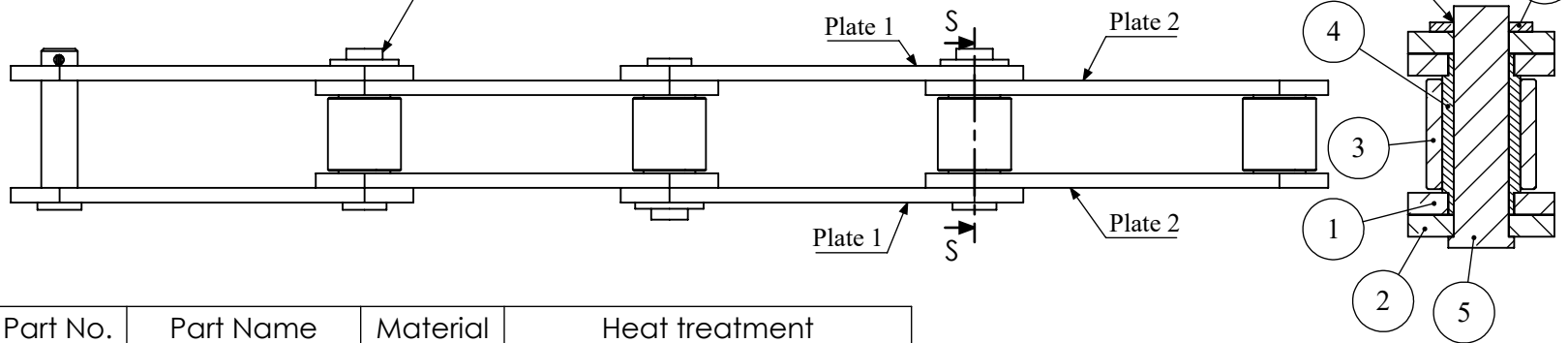
\* The chain should be assembled in 6-meter lengths and a pin with a spline should be considered for every 6 meters.



DIN 94-4x25 S.S.

Plain washer thk:3 S.S.

After welding, there should be 0.2 clearance between the plates 1&2.



SECTION S-S  
SCALE 1 : 2

Part No.	Part Name	Material	Heat treatment
1	Plate 1	CK60	Quench & Temper 42+3 HRC
2	Plate 2	CK60	Quench & Temper 42+3 HRC
3	Roller	S.S. 431	Quench & Temper 42+3 HRC
4	Bush	Mo40	Quench & Temper 42+3 HRC
5	Pin	Mo40	Quench & Temper 30+3 HRC
6	Washer 28x15x3	S.S. 304	
7	Split Pin 4x25	S.S. 304	

Notes:

Client:



SALCO

Title: Conveyor Chain

Drawn: A.Derakhshan

Checked:

DWG.NO:DG0505DE-DR-5011-Mec-1064

Material: See table

GEN.TOL. ACC. to ISO 2768-mk

Weight: --

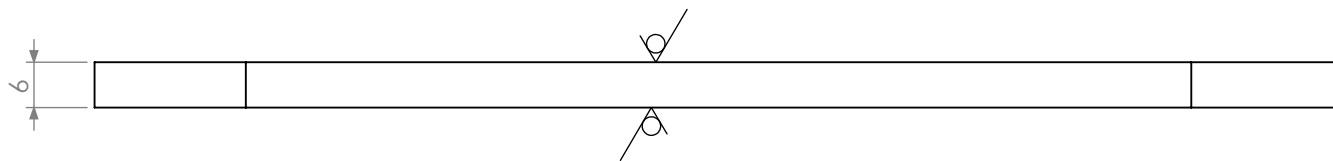
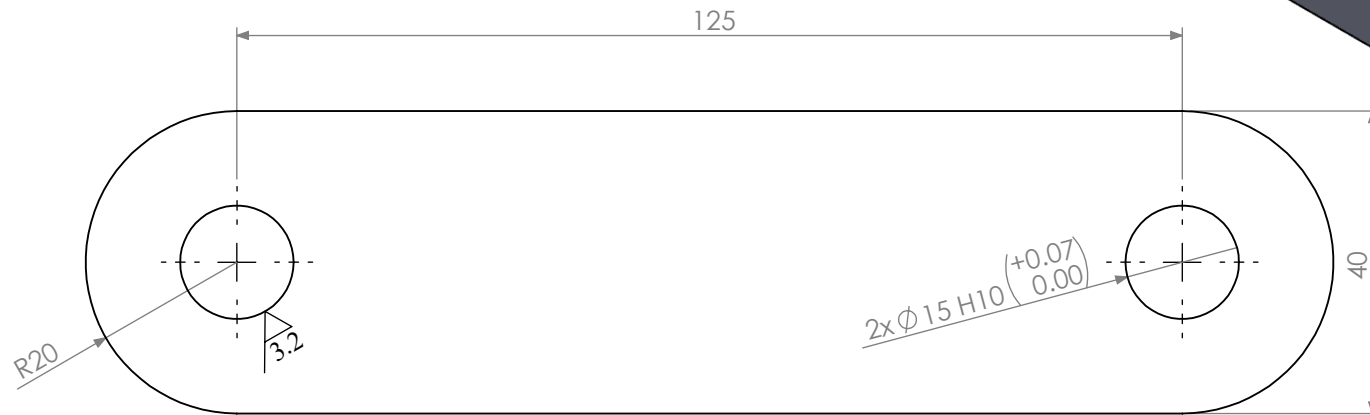
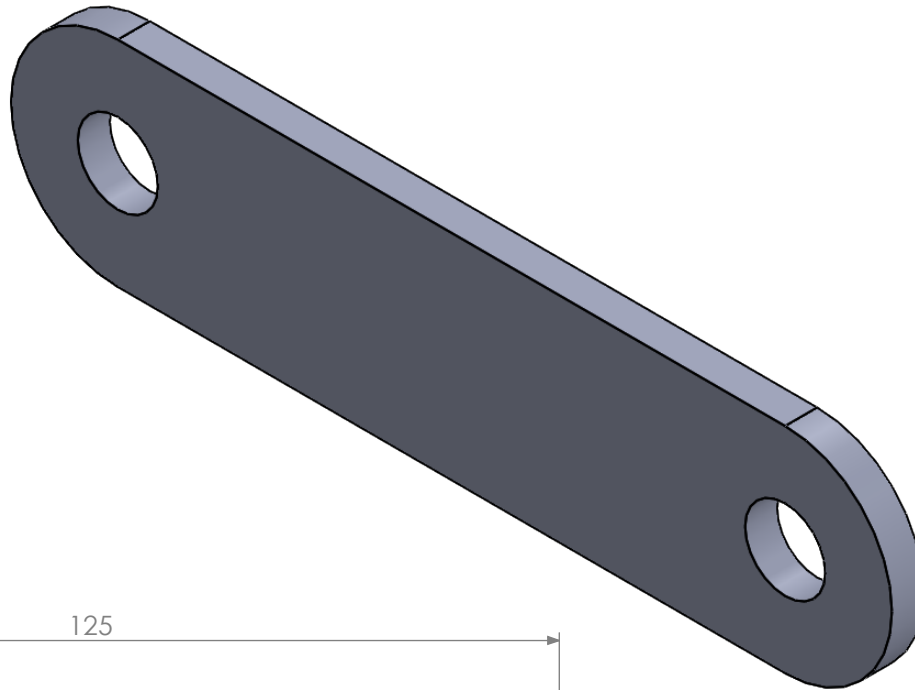
Rev.: C5

Date: 08/07/2023

Size: A4

Scale: 1:1

Sheet: 1 of 6



Notes:

1- All dimensions are in millimeters

Client:

SALCO



Title:

Plate 1

Drawn: A.Derakhshan

Checked:

DWG.NO:DG0505DE-DR-5011-Mec-1064

Material: CK60 Quench & Temper 42+3 HRC

GEN.TOL. ACC. to ISO 2768-mk

Weight: 276 gr

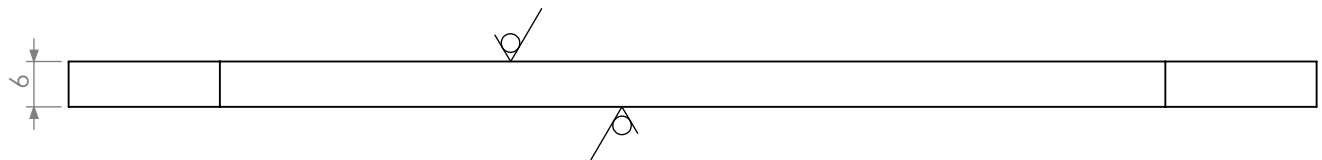
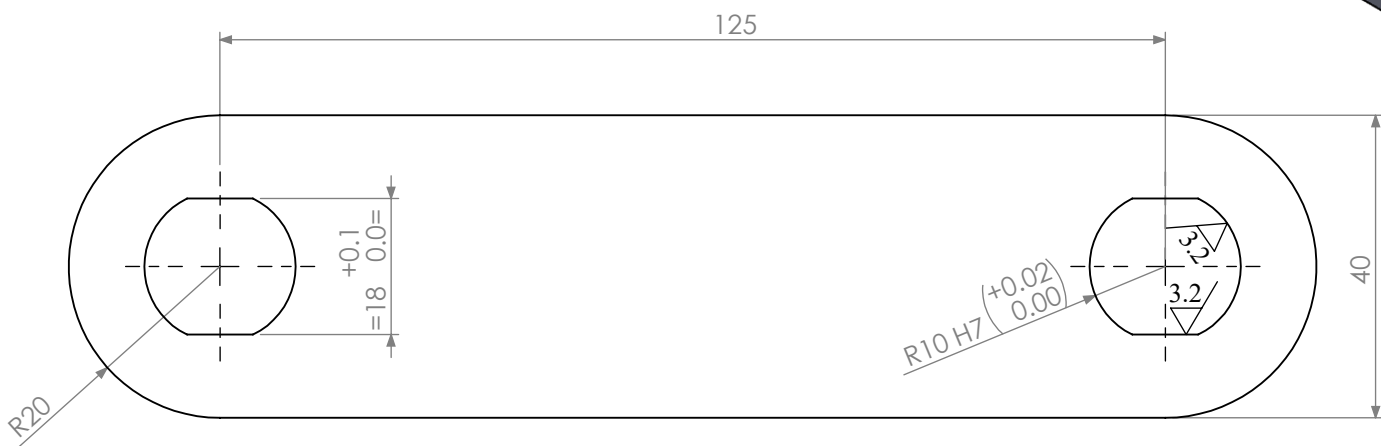
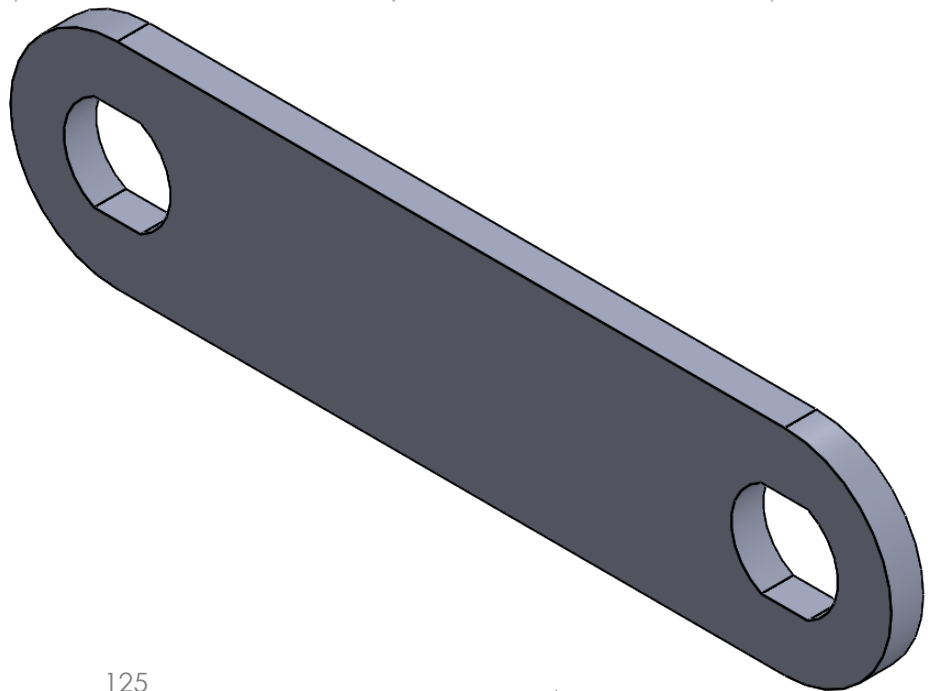
Rev.: C4

Date: 08/07/2023

Size: A4

Scale: 1:1

Sheet: 2 of 6



Notes:

1- All dimensions are in millimeters



Client:

SALCO

Title:

Plate 2

Drawn: A.Derakhshan

Checked:

DWG.NO:DG0505DE-DR-5011-Mec-1064

Material: CK60 Quench & Temper 42+3 HRC

GEN.TOL. ACC. to ISO 2768-mk

Weight: 264 gr

Rev.: C4

Date: 08/07/2023

Size: A4

Scale: 1:1

Sheet: 3 of 6



6

5

4

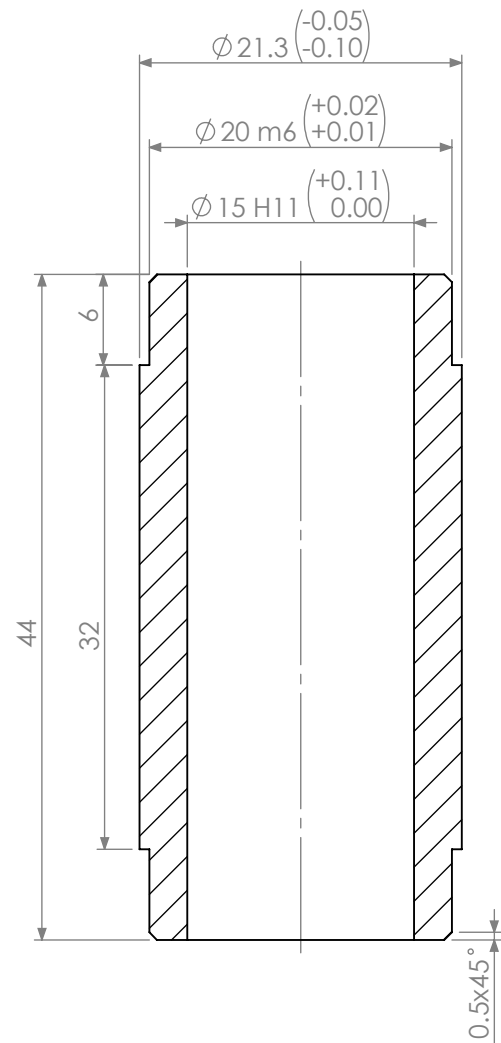
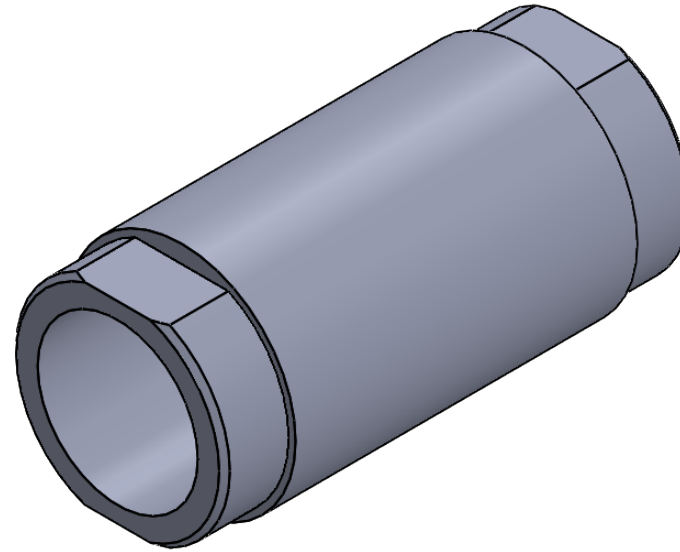
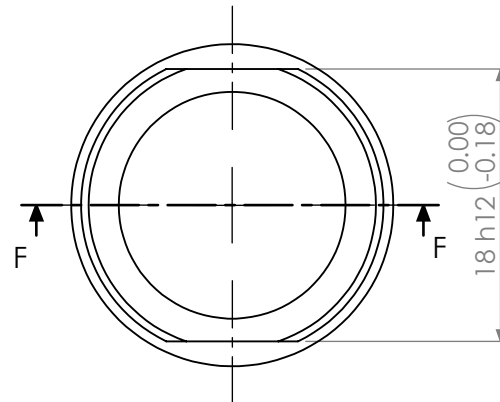
3

2

1

Notes:

1- All dimensions are in millimeters

SECTION F-F  
SCALE 2 : 1

Client:

SALCO



Title: Bush

Drawn: A.Derakhshan

Checked:

DWG.NO:DG0505DE-DR-5011-Mec-1064

Material:MO40 Quench&amp;Temper 42+3 HRC

GEN.TOL. ACC. to ISO 2768-mk

Weight: 56 gr

Rev.: C4

Date:08/07/2023

Size: A4

Scale: 1:1

Sheet: 4 of 6



6

5

4

3

2


1

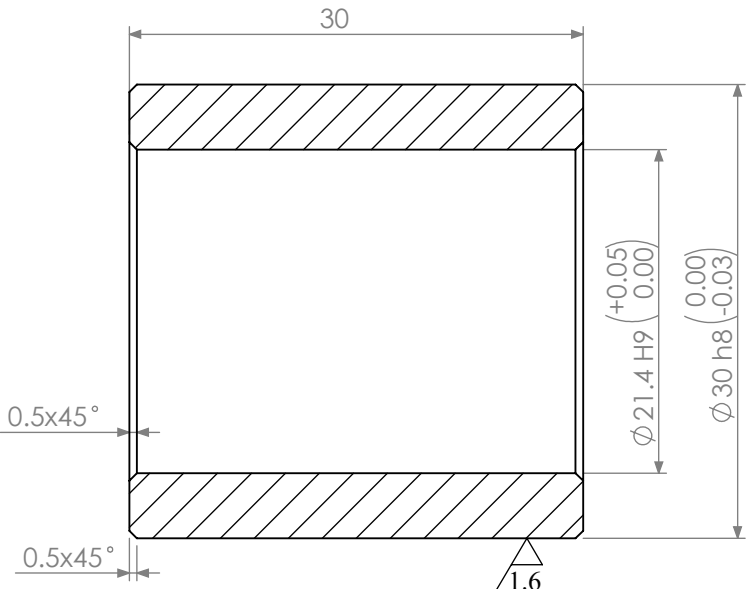
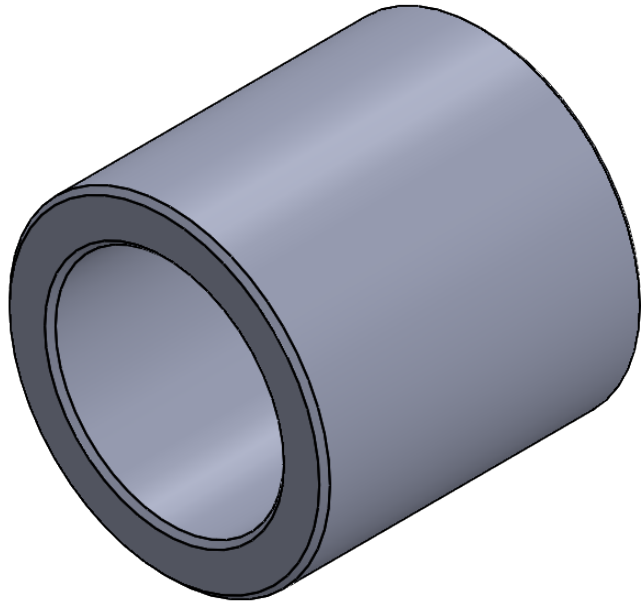
D

C

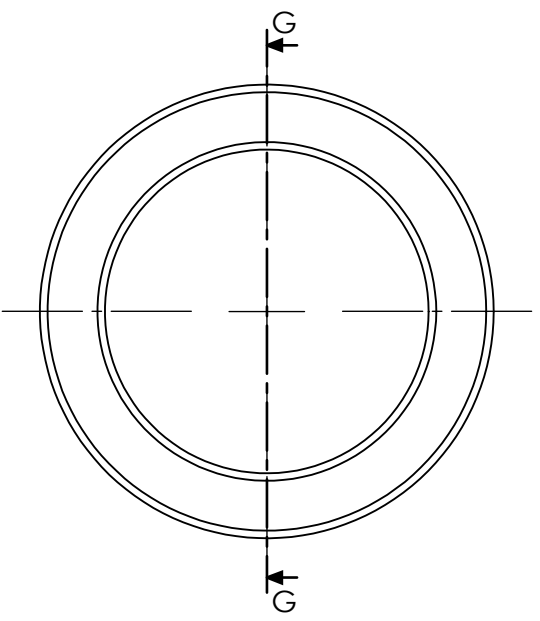
B

A

Notes:	
1- All dimensions are in millimeters	
Client:	 SALCO شركة مجتمع صنایع آلومینیوم جنوب SOUTH ALUMINUM CORPORATION
Title:	Roller
Drawn:	A.Derakhshan
Checked:	
DWG.NO:	DG0505DE-DR-5011-Mec-1064
Material:	S.S 431 Quench & Temper 42+3 HRC
GEN.TOL. ACC. to ISO 2768-mk	
Weight: 80 gr	Rev.: C5
Date: 08/07/2023	Size: A4
Scale: 1:1	Sheet: 5 of 6



SECTION G-G  
SCALE 2 : 1



3.2/

6 5 4 3 2 1

D

D

C

C


B

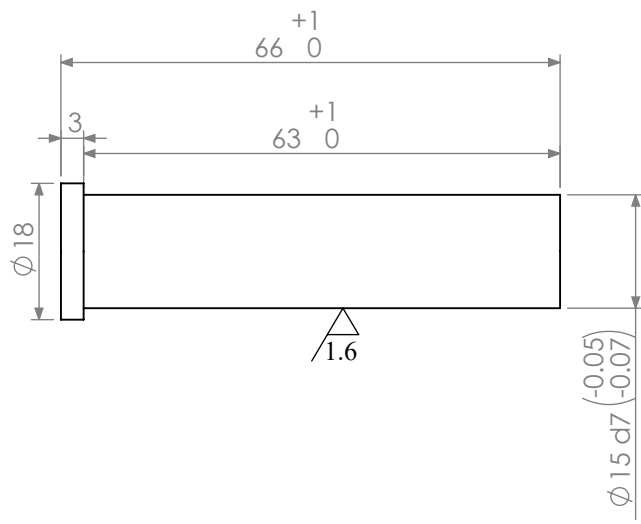
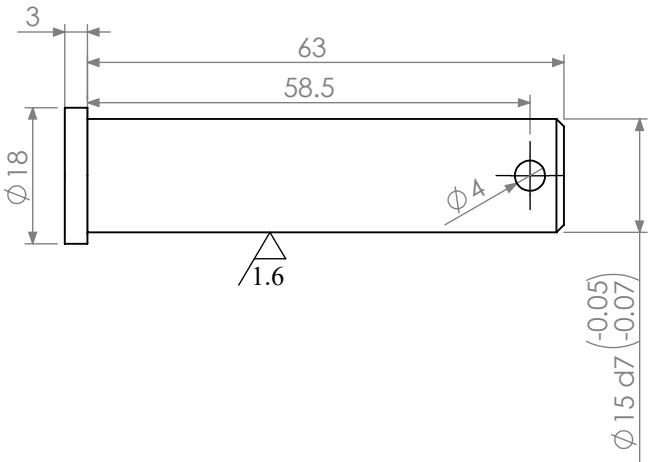
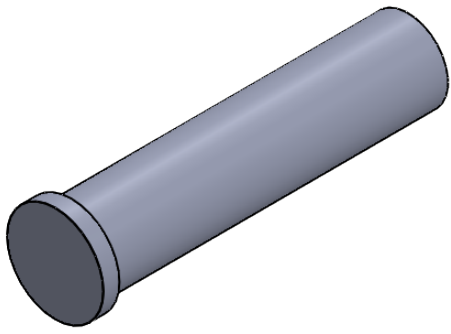
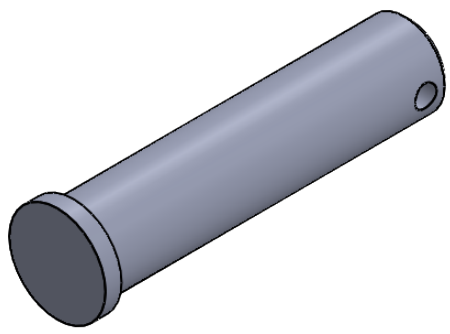
B

A

A

6 5 4 3 2 1

Notes:	
1- All dimensions are in millimeters	
Client:	 SALCO شركة مجتمع صنایع آلومینیوم جنوب SOUTH ALUMINUM CORPORATION
Title:	Pin
Drawn:	A. Derakhshan
Checked:	
DWG.NO: DG0505DE-DR-5011-Mec-1064	
Material: MO40 Quench&Temper 30+3 HRC	
GEN.TOL. ACC. to ISO 2768-mk	
Weight: 91 gr	Rev.: C5
Date: 08/07/2023	Size: A4
Scale: 1:1	Sheet: 6 of 6



3.2/

\* The chain should be assembled in 6-meter lengths and a pin with a spline should be considered for every 6 meters.

D  
C  
B  
A

D  
C  
B  
A

6 5 4 3 2 1