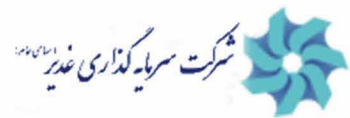




مجتمع صنایع آلومینیوم جنوب
SOUTH ALUMINUM CORPORATION





Contact us

Factory:

 Special Energy Economic Zone ,8 km of Iamerd-khonj axis roadT Iamerd city , Fars Province,PO Box 346

Tel: 071 – 52721901 – 2

Fax: 071 – 52721901

Tehran office

 No,35,13th St,Seyed Jamaluddin Asadabadi St,Tehran

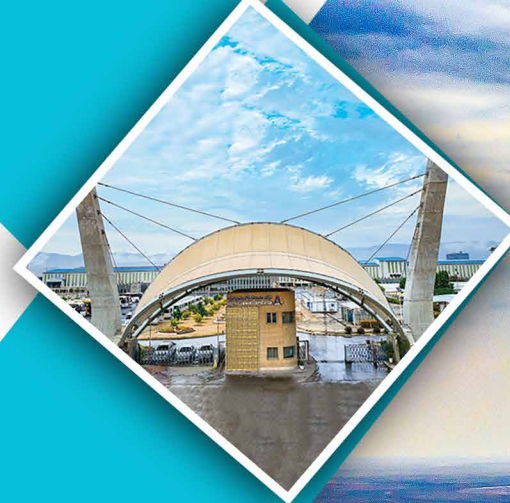
Tel:021- 53745000

Fax:021-88720140



info@salcocomplex.com

www.salcocomplex.com



South Aluminum Corporation (SALCO)

The Largest and Most Modern Iranian Aluminum Smelter



South Aluminum Corporation (SALCO)

The Largest and Most Modern Iranian Aluminum Smelter



About us

South Aluminum Corporation started its activity with the aim of meeting the needs of domestic markets and developing Aluminum export. The executive operations of the first phase of this industrial complex with a capacity of 300,000 tons per year began in December 2015. Then, about four years later, with the completion of the construction of the main production and administrative units, by production of the first aluminum ingot, SALCO's plant put into production.



Products

Ingot

Through automatic aluminum casting lines, the liquid aluminum obtained from the Potroom turns to ingots. 45 pieces of these ingots are automatically stacked by a robot to form bundles. These bundles are weighed, labeled and strapped

50 lb ingots specifications:

Purity: 99.7 to 99.9 percent (Aluminum Alloy upon costumer's order)

Weight: 22.5 kg ± 0.5 kg (50 lbs)

Production capacity: 144,000 tons per year (can be increased to 300,000 tons per year)



50 lb ingots

1000 lbs (500 Kg) Primary Aluminum Ingot: 1000 lbs aluminum ingot is produced by casting aluminum liquid in special 1000 lbs molds.

1000 lb ingot specifications:

Purity: 99.7 to 99.9 percent (Aluminum Alloy upon costumer's order)

Product weight: 500 kg (1000 lbs)

Production capacity: 144,000 tons per year (can be increased to 300,000 tons per year)



1000 lb ingot



Billet

Aluminum billets produced in SALCO's plant by semi-continuous casting or Direct-Chill method. High quality and the minimum amount of cracks in the product are among the advantages of the DC method for the production of aluminum alloy billets.

Grade: 6063 aluminum alloy (or other alloys upon customer's order)

Product size: Ø 280 x 7500 mm

Production capacity: 86,000 tons per year



slab

SALCO's aluminum slab production method is DC casting process.

Grade: 1050A aluminum (or aluminum alloy according to customer's order)

Product size: 380 x 1320 x 7500 mm

Production capacity: 70,000 tons per year



Facilities of Parsian Wharf

A dedicated wharf and a storage facility for imported raw materials of SALCO Plant has been built in Parsian Special Economic Zone. The dedicated wharf of South Aluminum Factory has been built for the berthing of ships with a maximum capacity of 70,000 MT for transporting bulk alumina, calcined petroleum coke (CPC) and coal tar pitch. Also, due to the installation of automatic Ship unloader devices in Parsian port by SALCO, the ship unloading. capacity including alumina and calcined petroleum coke is 1000 MT per hour.

The capacity of raw material storage silos in Parsian is as follows:

Storage	Capacity (MT)
Alumina silo	70,000
Coal tar pitch silo	6,000
CPC silo	20,000

